



Diving Adventures Aboard the VISION

303 Potrero Street #15, Santa Cruz, CA 95060 | (831) 458-3648 | www.asudoit.com



With clear water and lavish flora and fauna representing every hue imaginable, diving in the kelp forests around the Channel Islands is a unique experience. Giant kelp helps support an aquatic ecosystem that provides domicile for over more than 800 species of marine life.

An Adventure Sports Unlimited trip to the Channel Islands aboard Truth Aquatic's dive boat the *Vision* offers you the opportunity to discover a variety of underwater landscapes. Water visibility can range from 40 to 100 feet, and on rare occasions sometimes even up to 150 feet. There are untold opportunities for viewing and photographing a panorama of underwater vistas. The rocks are overlaid with brightly colored bouquets of anemones, starfish, and garlands of hydrocoral, sponges, and sea fans. Moray eels, octopus, abalone, rock scallops, California spiny lobsters, and a host of others inhabit rock fissures and crevices. Divers may chance upon giant black sea bass weighing in at 500 pounds, or a halibut, lingcod, vermilion rockfish, calico bass and more.

Migrating gray whales, blue whales, hump back whales; schools of dolphins, seals and sea lions are familiar sightings in the Channel Islands during crossings. The *Vision* is the *queen* of the Channel Island

live-aboard dive boats. She is spacious and comfortable; her crew caters to your every desire. The dive deck is well thought out and entry to and egress from your dives is so easy. On the upper deck is a spacious sun deck where you rest between dives while enjoying breathtaking view of the Channel Islands. The galley serves great hot meals and continuous snacks and beverage. Below deck is a drying room for you dive suit and comfortable berthing and showers. The dive boat *Vision* is the standard by which all others are measured.



2017 Schedule

- Southern Islands, May 27-29 - \$650
- Big Sur, June 15-18 - \$918
- Southern Islands, Sep 1-5 - \$1150

You must provide the following:

- Personal Dive Gear which includes but is not limited to: mask, fins, snorkel, wet/dry suit, weight belt with weights, hood, booties, tank, regulator, gauges/computer, BC, and dive bag
- Personal toiletries
- Bedding and/or sleeping bag for your bunk

Payment & Cancellation Policy: 25% deposit due at booking, 50% deposit due 60 days prior to trip. Full payment due 30 days prior to trip. Full refund if cancellation request received within 3 days of booking, or 60 days prior to start of trip. If canceling 59 to 30 days prior to trip, a store credit will be issued and 50% of trip is due. Less than 30 days prior to trip, no refund or store credit will be issued unless trip reaches full capacity.

Planning Guide for Channel Islands Diving Trip Aboard The Vision

Driving Directions from Santa Cruz (about 270 miles, 5 hours)

- (1) Start on highway-1 South for 26.8
- (2) Turn left on Merritt St. and continue on Castroville Rd. into Salinas
- (3) In Salinas catch highway 101 south
- (4) Continue on US-101 South for 231.8
- (5) In Santa Barbara take the Castillo St. exit towards the Harbor
- (6) Turn right on Castillo St. and drive about .4 miles to the end
- (7) Turn right on W. Cabrillo Blvd. and take the next left at Harbor Way

Harbor Way is the main harbor entrance. Take a left at the Naval Reserve Building, and pass into the parking lot after taking a parking ticket. Go straight to the last parking lot; you will see the Sea Landing Building and the Boats sitting at the dock. You may off load your gear on the sand next to the walkway going to the docks. You cannot remain here. Beware of the soft sand. Park only in the parking stalls. Double length stalls are reserved for vehicles with boat trailers. If you parked in a double stall you will be ticketed and towed. Make sure you take your parking ticket into the Sea Landing Office and Dive Shop for validation to save on parking costs.



Trip Planning Guide

Use this guide to help plan your Adventure Sports event. Record your food assignment, personal shopping list and planning checklist.

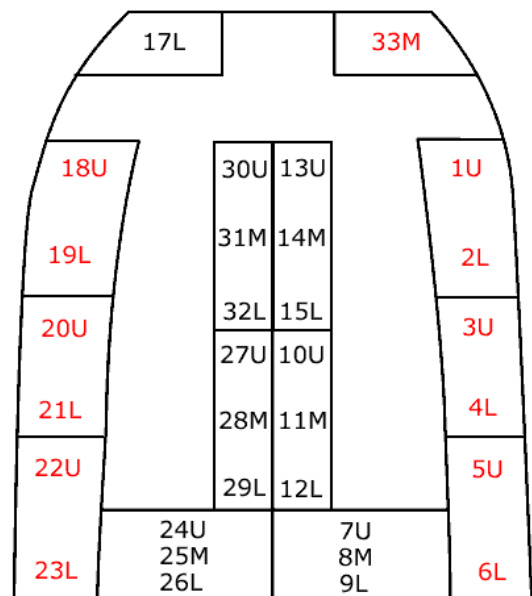
Snack/Beverage Assignment:

Personal Shopping List (There is plenty of food, snacks, and soft drinks on board, however, you may wish to bring your own personal beverages or favorite snacks)

Checklist of Optional Personal Items

- | | |
|--|---|
| <ul style="list-style-type: none"> ○ Binoculars ○ Blanket for sundeck ○ Book/magazines ○ Camera, film and batteries ○ Clothing – day, evening and night ○ Cocktail & wine glass ○ Coffee and French Press ○ Cooler box with ice ○ Diving / snorkeling equipment ○ Fishing license ○ Warm Clothing | <ul style="list-style-type: none"> ○ Kayaks & accessories ○ Lobster collecting gear ○ Personal beverages and snacks ○ Games ○ Save-a-dive kit ○ Sea sickness medicine ○ Spare dive gear ○ Spear gun/pole spear ○ Sunscreen, sunglasses and hat ○ Toiletries and towel |
|--|---|

Your bunk assignment aboard the Vision



Pillows, blankets, curtains, reading lights and storage for personal belongings are provided. However, we recommend you bring your own sleeping bag for added comfort.